



This is a quick guide to the basics of the X-Radio PRO

X-RADIO PRO

INCLUDED IN THE BOX YOU WILL FIND

- The X Radio PRO
- A power cable with plug.
This is attached to the X-Radio PRO
- A 1.5 meter audio cable
- A network cable of 3 meters

INSTALL

To install the X-Radio PRO, connect the audio cable and network cable to the appropriate inputs on the back of the X-Radio PRO.

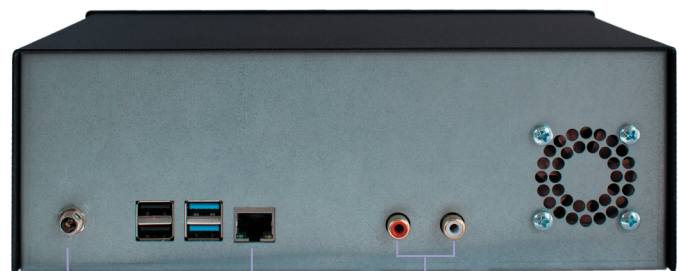
Once you have connected the cables, you can activate the X-Radio PRO. The power button is on the front. After activation, the X-Radio PRO will immediately play the right music. You don't have to do anything for this, because this music is pre-programmed. After activation you can see in the display which music is playing, as shown in the picture:



MENU: This takes you to a selection menu



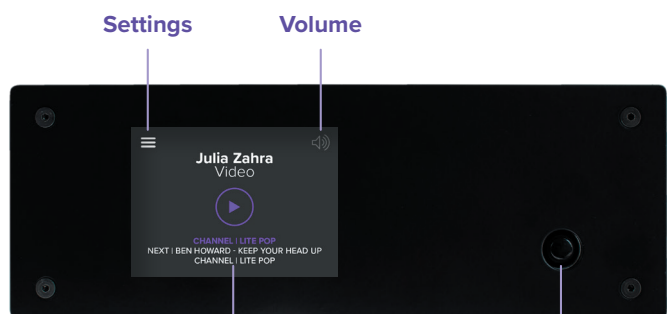
VOLUME: Allows you to turn the volume on or off. If you want to turn the volume up or down, you must do this on the amplifier at your location. This amplifier is not supplied by Xenox Music & Media.



Power supply

Network

Cable Audio cable left/right



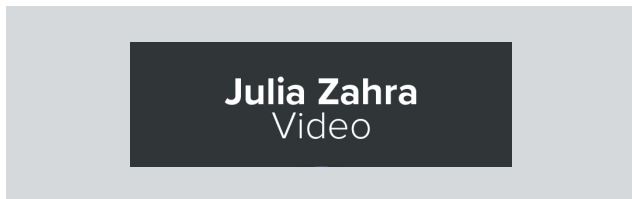
Settings

Volume

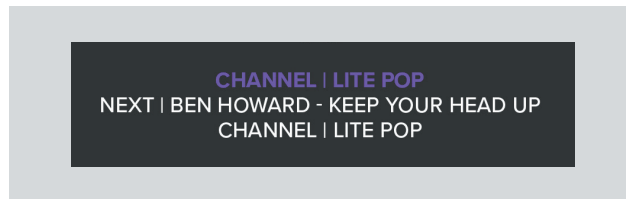
Display/
Touch Screen

Power

DISPLAY



This is the **TITLE AND ARTIST** currently playing.



Displays information about the **CHANNEL** being played.

MENU

When you select the menu, you can select a number of options on the touchscreen.



This puts the X-Radio ^{PRO} on **STANDBY**. However, you don't have to do this. The music is scheduled to stop automatically when your venue closes.



Here you can see which Channels are available on the X-Radio ^{PRO}.



This will take you back to the **HOME SCREEN** and see which track is currently playing.



This will take you to the **SETTINGS MENU**. **We recommend that you only use this menu if you need to contact our helpdesk due to a malfunction.**

XENOX SUPPORT

Whenever there is a problem with the Xenox Music and Media System or if you need technical support, please contact our help desk.



+ 31 (0)345 57 21 22



helpdesk@xenox.nl

YOU CAN REACH US AT THE FOLLOWING TIMES

Monday to Wednesday **8:30am - 5:30pm**

Thursday **8:30am - 10:00pm**

Friday **8:30am - 12:00am** (midnight)

Saturday **9:00am - 12:00 am** (midnight)

Sunday **9:00am - 7:00pm**